

AIRREX DEHUMIDIFIER

USER'S MANUAL

ADH-100

- ▶ Thank you for purchasing an AIRREX DEHUMIDIFIER. BEFORE operation please read this user's manual carefully.
- ▶ Keep this manual readily available.
- ▶ It is ESSENTIAL that you read the 'NOTES ON SAFETY' carefully before use and follow them at all times.
- ▶ This Dehumidifier is specified for use on a 115V~ 60Hz single phase power supply. You must check that the local electricity supply is the same and have the appropriate plug fitted by a qualified electrician.
- ▶ The Warranty form is on Page 15. Please complete it now and keep in a safe place.
- ▶ We have a policy of continual improving to our products. The contents (features and specifications) in this manual are therefore subject to change without notice.

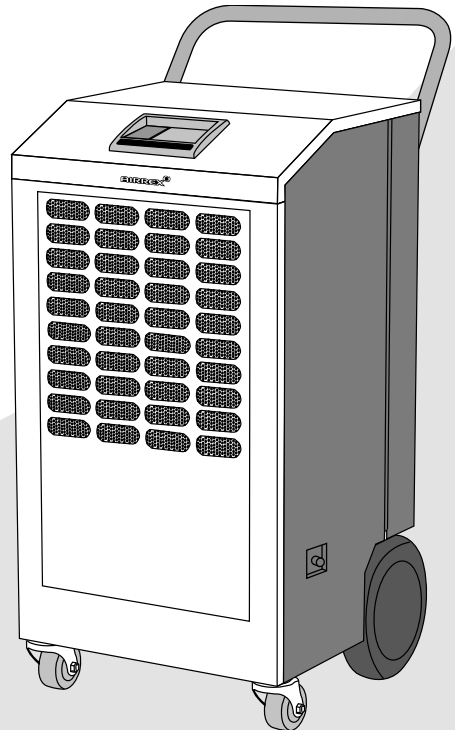


TABLE OF CONTENTS

■ SAFETY INSTRUCTIONS	3
■ GENERAL ADVICE BEFORE USE	4
■ DESCRIPTION	5
·FRONT VIEW	5
·BACK VIEW	5
·CONTROL PANEL FUNCTIONS	6
■ OPERATION	7
·RUNNING & STOP	7
·HUMIDITY CONTROL OPERATION	8
·HOW TO SET THE 'OFF' TIMER	9
·'ERROR' AND WARNING INDICATORS	10
■ CLEANING AND MAINTENANCE	11
■ TROUBLE SHOOTING	12
■ MANUAL PUMPING	12
■ SPECIFICATIONS	13
■ WARRANTY	14

SAFETY INSTRUCTIONS

The following instructions are for ensuring the user's safety and to prevent any physical injury or material damage. Please read carefully and follow all instructions.


There are two sections to these instructions: WARNING and CAUTION.

The following symbols are for your guidance:

= You must NOT. = You MUST.

WARNING

- Use a 115V~ 60Hz 1 Phase power supply only.
(Wrong supply may cause a fire and / or shock hazard)
- Securely plug into an earthed supply.
(Unless earthed, may cause electric shock)
- Do not use a damaged power cable, plug or socket.
(Short, fire or shock hazard)
- Do not remove plug by pulling cable or with wet hands.
(Risk of fire and electric shock)
- Before cleaning, remove plug from socket.
(Otherwise risk of electric shock)
- Do not use an extension lead unless of the approved type.
(Risk of fire and / or electric shock)
- Ensure mains plug is clean and securely plugged in.
(Otherwise it may short causing smoke and fire)
- Do not 'kink' or sharply bend the power cable nor put any weight on it.
(The insulation may be damaged causing fire and/ or electric shock)
- Do not turn off by removing power plug. Always turn off at control panel first.
(Risk of electric shock and / or malfunction)
- Do not use this dehumidifier on unstable or inclined surfaces. Always use on solid flat floor. (Risk of falling causing injury, fire or malfunction)

 Keep this manual in a visible location near the dehumidifier for easy reference.

SAFETY INSTRUCTIONS

CAUTION

- Do not place dehumidifier on uneven, unstable or inclined surface.
(This could cause malfunction)
- When storing the dehumidifier, ensure that it is kept in a dry, cool place.
(To prevent corrosion and malfunction)
- If not being used for some time or if lightening is present, always unplug from power.
(To prevent risk of electric shock, short circuit or fire)
- Do not spray water on to the dehumidifier nor use solvents such as benzene, thinner or alcohol for cleaning.
(There is a risk of electric shock and / or short circuit)
- If the power cable is damaged this must be replaced by a fully qualified electrician.
(To avoid danger of electric shock, short circuit or fire)

GENERAL ADVICE BEFORE USE

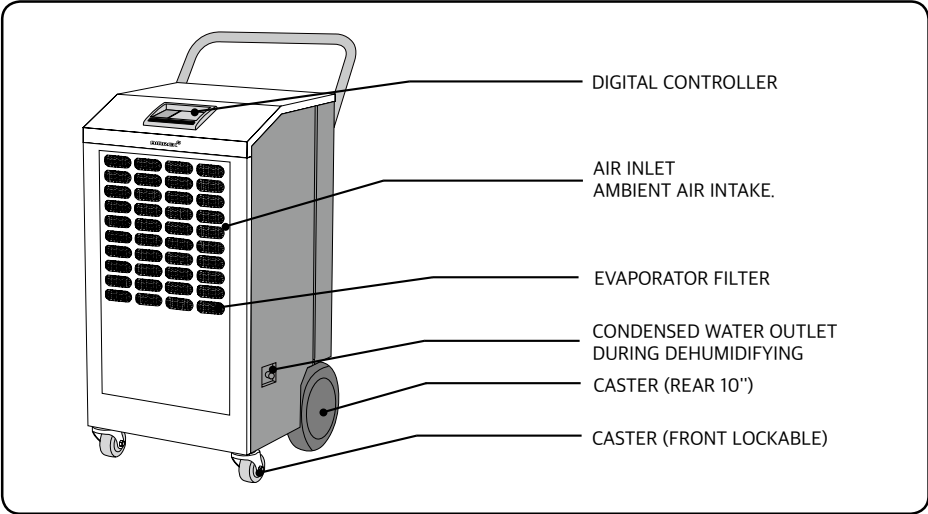
- Ensure the safety of the location in which dehumidifier is to be used.
- Ensure the floor or ground is smooth and sound.
- Ensure you allow at least 3.28ft air space all around the dehumidifier.
- When in position LOCK the casters to prevent rolling.
- Never use the dehumidifier at more than 2° incline.

FOR MAXIMUM EFFICIENCY

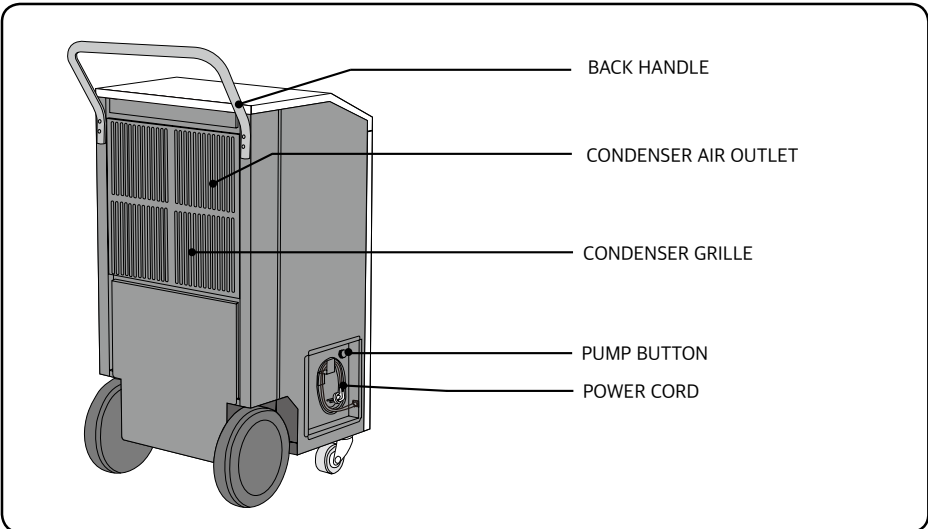
- Ensure correct electricity supply.
- The proper electricity is 115V~ 60Hz It will be applied and adjusted as per customer's request.
You must supply power as per it's requirement only once it is adjusted.
- This appliance is not intended for use by persons (including children) with reduced physical, sensory or mental capabilities, or lack of experience and knowledge, unless they have been given supervision or instruction concerning use of the appliance by a person responsible for their safety.
- Children should be supervised to ensure that they do not play with the appliance.

DESCRIPTION

FRONT VIEW

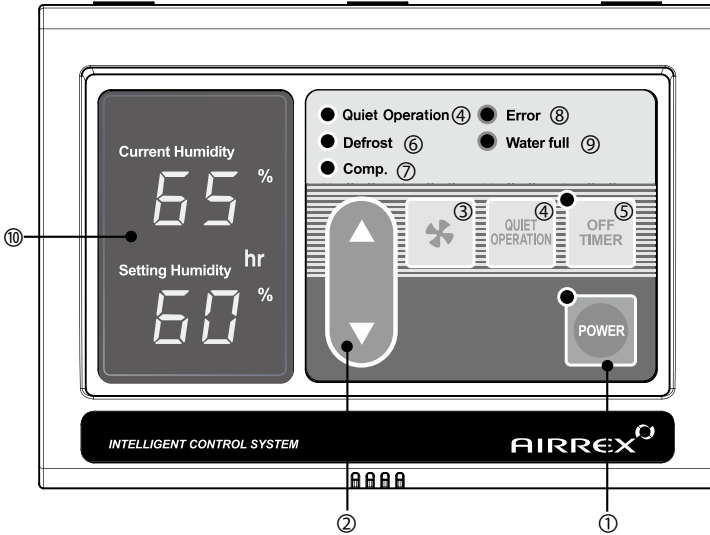


BACK VIEW



DESCRIPTION

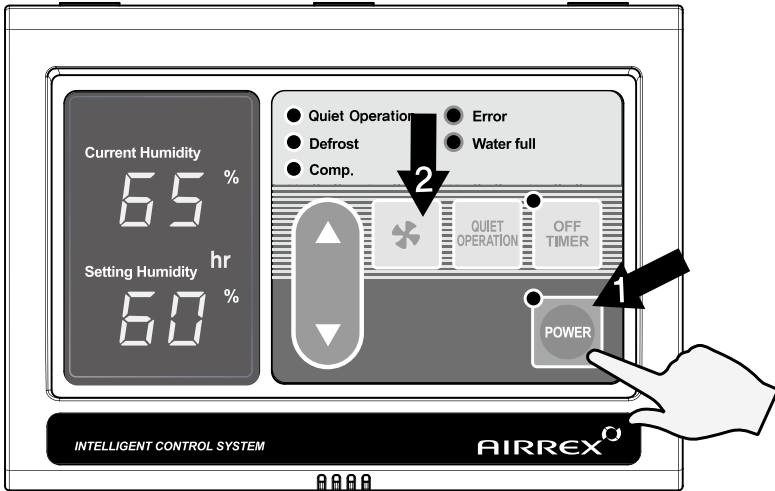
CONTROL PANEL FUNCTIONS



- ① Power : Use to power On / Off.
- ② ▼▲ : Raises or lowers setting humidity and sleep (off) time.
- ③ Fan Intensity : Controls fan speed. high,medium,low ('F3' 'F2' 'F1')
- ④ Quiet Operation : Set fan speed slower than 'Low'(FL), the LED is on.
- ⑤ Off Timer : To set the length of time, once turned on, that you wish the dehumidifier to run for. You can set 0~24 hours. Time intervals are 0mins. up to 10 hours and then 1 hour between 10 and 24 hours.
- ⑥ Defrost : When the temperature of the evaporator is below -4°C the defrost valve operate and 'Defrost' led is on.
- ⑦ Comp. : When the compressor is operating, the LED is On.
- ⑧ Error : Error signal
(E : High Pressure, E2 : Low Pressure, E3 : Defrost Sensor, HU : Humidity Sensor)
- ⑨ Water Full : Red light indicates 'Tank Full'. The compressor will shut off automatically. Empty tank and check if condensate wafer pump operate well.
- ⑩ Display : Display current humidity, setting humidity and sleep time in case of setting them. When the user set the sleep timer, 'hr' will be turned on.

OPERATION

RUNNING & STOP



1. START BY PRESSING THE 'POWER' BUTTON.

- Dehumidifier will start up automatically.
- To STOP the unit, press the 'POWER' button once again.

2. To change fan speed, press the 'Fan' button.

('F3' : High, 'F2' : Medium, 'F1' : Low)

- Anti-freezing and prevention of high pressure at 15°C below

At an ambient temperature 15°C below or over 30°C, you cannot control air volume

Fan will work hard, () will be displayed for 6 seconds and Humidity set point will be on screen of Humidity Setting for 4 seconds.

OPERATION

HUMIDITY CONTROL OPERATION



1. When power is ON, the setting humidity is displayed. Default of setting humidity is 60%.



2. When you push either ▼ or ▲ button, the setting humidity is changed.



3. The display showing the setting humidity will blink 3 times.

4. Limits of Setting humidity.

Current Humidity	Setting Humidity
0% - 95%	00% - 80%

Dehumidifier operates when current humidity is more than setting humidity.

Dehumidifying stops when current humidity is less than setting humidity.

OPERATION

HOW TO SET THE 'OFF' TIMER



1. When dehumidifier is operating, press the 'Off Timer' button and set the length of time you want by pressing ▲ or ▼.

Each time you press the button you will increase the 'time to off' period by 30mins. up to 10 hours, and 1 hour thereafter up to 24 hours.

The display will show 0.5 for 30min and 1 for an hour.

e.g. One and a half hours will show 1.5.



2. When you have finished setting the time period, the 'Off Timer' lamp will be on which indicates dehumidifier is in sleep (Off Timer) mode.

OFF TIMER LAMP IS ON



3. If you press the 'Off Timer' button during its operation, the remaining time will be shown.

AFTER 1hr



4. To CANCEL timing, press 'Off Timer' button for ONE second. It will then switch the timer off automatically.

* This function enables you to set the length of time you want the dehumidifier to operate. You can set the time period from 30min. to 24 hours in 30min. and 1 hour increments.

OPERATION

'ERROR' AND WARNING INDICATORS



1. WATER FULL- Display shows "tF"

When the water container is full, "tF" is displayed and the LED "Water Full" light will be on.



2. HIGH PRESSURE

'E1' is displayed and the 'Error' LED will be on when the pressure of the compressor is too high and the high pressure switch is open.



3. LOW PRESSURE

'E2' is displayed and the 'Error' LED will be on when the pressure of the compressor is too low.



4. DEFROST SENSOR PROBLEM

If the thermistor for defrost is short circuited or cut, 'E3' is displayed and the 'Error' LED will be on.



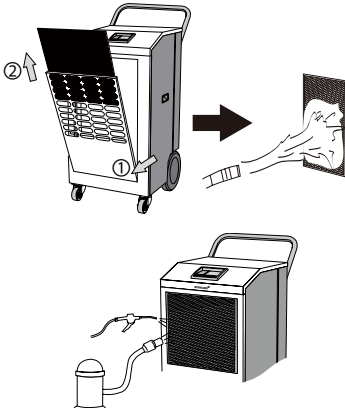
5. HUMIDITY SENSOR PROBLEM

If the Humidity Sensor is short circuited or cut, 'Hu' is displayed and the 'Error' LED will be on.

The machine's safety devices will automatically signal any problems via the display window on the control panel. The information below shows how to read these signals.

CLEANING AND MAINTENANCE

CLEANING THE AIR FILTERS

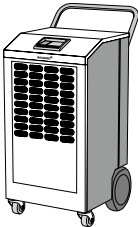


1. To remove filters, open the front case ①, and pull towards you. ②

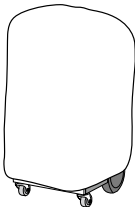
2. Clean the filters with water or compressed air.

3. Clean heat exchanger unit with a vacuum cleaner or compressed air.

MAINTENANCE



1. Turn "OFF" at control panel, remove plug from socket. Coil and store cable neatly.



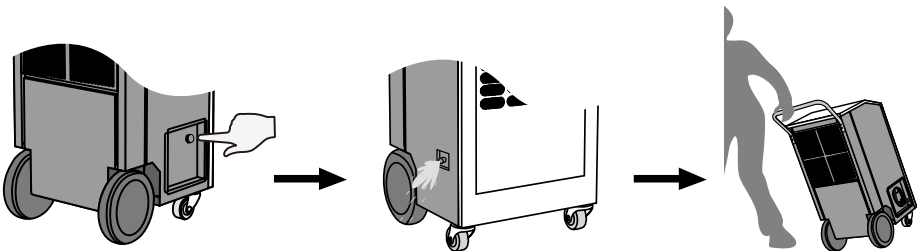
2. Keep machine suitably covered to prevent damage by damp, humidity and dust.

TROUBLE SHOOTING

TROUBL	CHECK	REMEDY
NOT WORKING	● Power plug correctly connected	● Connect plug correctly
	● POWER button "OFF"	● Press POWER button to "ON"
	● Blown fuse in electric panel	● Replace fuse (10A)
	● Fuse blown	● Exchange fuse in board (1A)
	● Breaker on switch board tripped	● Check load capacity and reset
POOR DEHUMIDIFYING	● Filter blocked with dust	● Clean Filter
	● Dust in heat exchanger	● Clean heat exchanger
	● Obstacle against inlet side	● Remove and allow 3.28ft clearance
	● Ambient temp. too high (over 95°F)	● Use only below 95°F

MANUAL PUMPING

If you move Dehumidifiers to another place it is necessary to empty condensate water in tank, so press pump button to empty water in tank.



SPECIFICATIONS

Model		ADH-100
Capacity	gal/day	Maximum 32 (86°F 80%) Nominal 22 (80°F 60%)
Power Supply		115Vac 60Hz 1Ph
Dimension(WxDxH)	inch	19.9 X 21.8 X 39.2
Weight	lbs	132
Air Flow	ft ³ /min	400
Power Consumption	kW	1.2
Current Consumption	A	10
Refrigerant (R-410A)	lbs	2.2
Air Filter		Vinyl Chloride Mesh Catridge
Safety Device		<ul style="list-style-type: none"> ▶ High pressure switch ▶ 3 min. delay timer ▶ Automatic full tank shut-off ▶ Low pressure switch ▶ Fan motor protection ▶ Thermostat protector for compressor
Power Cord	Device	LCDI Nema 5-15
	Length	9.8 ft
Operating Range		41°F~95°F, 30%~90%
High Pressure	psi	441
Low Pressure	psi	128
Fuse in power box in Machine body		250V~ 10A

WARRANTY

(Applicable to first retail purchaser only)

AIRREX DEHUMIDIFIER give more reliable performance, comfort and durability the more they are used. They are built under a strict quality assurance regime which includes inspection both during and after production and exhaustive reliability testing.

In the unlikely event you have any problems, please contact your dealer or distributor. If the problem is as a result of a production fault or failure, repairs will be undertaken free of charge during the period of warranty subject to the following warranty conditions:

1. The warranty period is 12 months from the date of first purchase.
2. If the problem has been caused by customer error or misuse, abuse or damage, then all repairs will be charged for.
3. This warranty applies to your country.
4. Proof and date of purchase must be supplied.
5. Please complete the details below and keep this warranty in a safe place.
6. All transport charges back to the dealer are at the customers cost. Keep all original packaging to facilitate return. Return to customer will be at dealers cost (if genuine warranty claim).

DESCRIPTION	DEHUMIDIFIER		
MODEL	ADH-100		
DATE OF PURCHASE		PRODUCT SERIAL NO:	
Warranty Period	() Months		
DISTRIBUTOR	Name of Company		
	Telephone No.		
CUSTOMER DETAILS	Name :		
	Address :		
	Telephone :		

memo.

**Manufactured by :**

HEPHZIBAH CO.,LTD.
(Juan-dong) 86, Gilpa-ro
71beon-gil, Nam-gu,
Incheon, Korea
TEL : +82-32-509-5834
FAX : +82-32-502-5519
E-mail : airrex@hdtex.com
Website : www.airrex.biz

Distributed by :

Airrex USA - Corporate Office
7005 Woodway Dr Ste 214
Woodway, TX 76712
TEL : 888-535-8841
FAX : 469-574-7924
E-mail : sales@airrexusa.com
Website : www.airrexusa.com

Mailing Address:
PO Box 23776
Waco, TX 76702