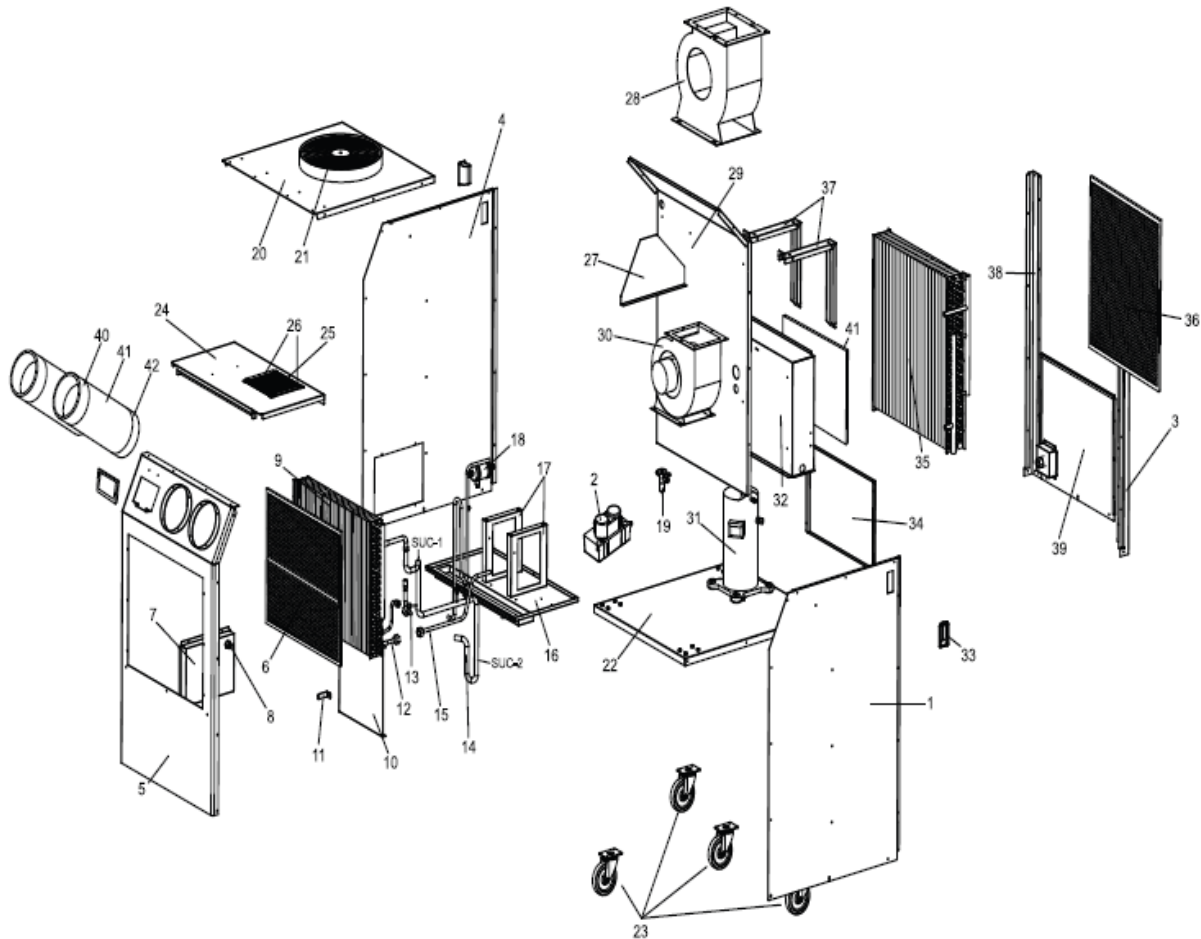


ASSEMBLY DRAWING & PART LIST HSC-36B



No.	Parts Name	No.	Parts Name	No.	Parts Name
1	CABI RIGHT	19	EXPANSION VALVE FBVE-S-C R22	37	CABI COND MOTOR SUPPORT
2	CONDENSATE PUMP	20	CABI TOP ASS'Y 397	38	CABI BACK FRAME LF
3	CABI BACK FRAME RH	21	CABI TOP GRILLE 385 2009	39	CABI POWER BOX COVER
4	CABI LEFT	22	CABI BASE ASS'Y	40	7" Trim Ring
5	CABI FRONT	23	CASTER FRONT / REAR	41	DUCT (Length: 19.7inch)
6	FILTER EVAPORATOR	24	CABI PARTITION-B ASS'Y	42	Flange (Duct Base)
7	CABI CONDENSATE PUMP COVER	25	FILTER MESH		7" Cold Air Nozzle Kit (optional)
8	ONE TOUCH FITTING PMM	26	CABI MESH GUARD		
9	HEAT EXCHANGE EVAPORATOR	27	CABI PARTITION-C		
10	CABI SUPPORT	28	MOTOR EVA GSM3554HBRC		
11	CONDENSATE BKT	29	CABI PARTITION-A		
12	TUBE DRY-EXP IN	30	MOTOR COND GSM5106HBRC		
13	TUBE EXP-EVA IN	31	COMPRESSOR ZR36K3-PFV R22		
14	TUBESUC-1 / TUBESUC-2	32	CABI POWER BOX PANEL		
15	TUBE COND OUT-DRY IN	33	PLASTIC HANDLE		
16	CABI DRAIN PANEL ASS'Y	34	CABI POWER BOX PLATE		
17	CABI EVA MOTOR SUPPORT	35	HEAT EXCHANGER CONDENSER		
18	DRYER EK084 FLARE 1/2"	36	FILTER CONDENSER		