



HSC-18P

Cool Solutions by Airrex! Approved technology with 37 years experience in the market! Airrex Spot Cooler 1.5-Ton

Airrex spot coolers operate in air temperatures from 61°F to 115°F. These air conditioners utilize eco-friendly R-410A refrigerant.

Airrex spot cooler air conditioners may require a fresh air supply for proper operation. Includes removable, washable air filters for easy maintenance. Thermostatically protected compressor includes high and low pressure warnings. Moves easily on four swivel casters (2 locking). 16,800 BTU Cooling feature two 5" diameter front cold air discharge and 12" diameter top warm air discharge.

Optional Warm Air Duct includes ducting and a 2' x 2' ceiling flange for warm air exhausting.

ETL listed. Optional Condensate Pump that plugs directly into the portable air conditioner.

1 year warranty and 3 years on compressor.

Strong Points



Quiet



Thermostats



Intensive Air Conditioning



Movable & Lockable



Energy saving



Automatic



Time Setting

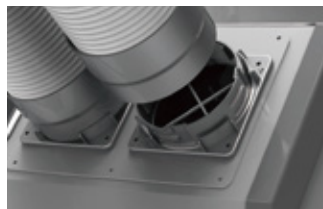


Certification



Hot Air Exhaust

Automatic Fan Speed Controller
Operating Range : Up to 115°F



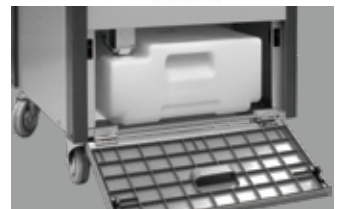
Twist & Lock

(2) 5"x14"
Easy to disassemble & store



Mobility

(4) 4" Swivel Casters
(2) Locking Casters



Condensate Tank

5 Gallon Tank Auto Shut off



Spot Cooling

Directed Cooling
16,800Btu/h



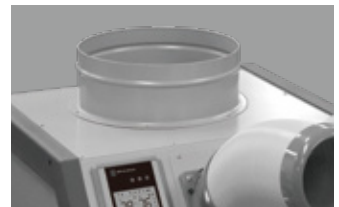
Digital Controls

Programmable Timer
Temperature Range: 61°F to 86°F
High/Low Fan Speed / Auto Restart



LDCI Protection

LDCI Recessed Power Cords
Standard 115 Volt Power
ETL Certified



Applications

Indoor or Outdoor
Cooling Drying

HSC-18P Specifications

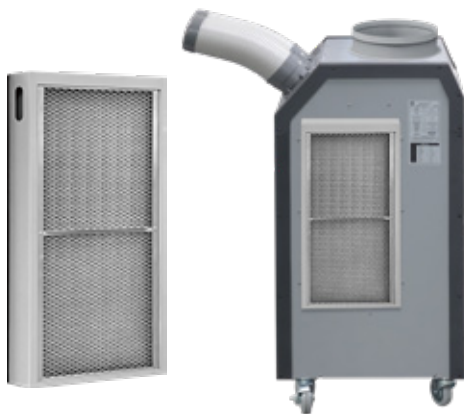


SPECIFICATIONS				Air-Cooled		Fans	Fan Type		-	Centrifugal
				HSC-18P			Outdoor		Air Volume (High/Low)	CFM
Capacity Rating Condition	Cooling	(35°C/95°F 40%)	Btu/h	16,800 Btu/h	Sound Level	With Exhaust Duct	High / Low	dB(A)	58 / 56	
	Heating	(21°C/70°F 50%)	Btu/h	-		Without Exhaust Duct	High / Low	dB(A)	59 / 57	
	Dehu	Max. (32°C/89°F 80%)	gal/day	30		Air Filter	Type	Indoor	-	Alu+SUS mesh
		Nominal (27°C/80°F 60%)	gal/day	18			Type	Outdoor	-	Alu+SUS mesh
Electrical Characteristics	Voltage	60 Hz	Volts	1 Phase, 115 V~	Condensate	Tank	Capacity	gal	5	
	Power Consumption	Cooling	kW	1.67		Auto Pump	-	Optional		
		Heating	kW	-	Refrigerant	Type	-	R-410A		
	Current	Cooling	A	15,4		Weight	Net Weight	lbs	175	
		Heating	A	-	Dimensions		W x D x H	inch	22 x 25 x 49	
	Fuse Size		A	20		Operating Conditions	Min. - Max.	Cooling	°F	61~115 (16~46°C)
Min. - Max. Voltage		v	98 - 127 V~	Heating	°F			-		
Power Cord	NEMA Plug		-	5 - 20	Dehumidification			°F	55~115 (13~46°C)	
	Gauge		-	12 AWG (3-core)	Safety Device	High Pressure Switch		○		
	Length		ft	10		Low Pressure Switch		○		
Fans	Indoor	Fan Type	-	Centrifugal		Compressor 3min, Delay Timer		○		
		Cooling Air Volume (High/Low)	CFM	440 / 380		Thermostat Protector for Compressor		○		
		Heating Air Volume	CFM	-		Fan Mortor Protection		○		
		Dehu Air Volume	CFM	400		Automatic Full Tank Shut-Off		○		
		Max. External Static Pressure	inchH2O	0,3		Tank Position Dectector		○		
		Max. Equivalent Duct Length	ft	30						
		Type / Size	inch	Duct / 5" (Ø125) x2						

* Designs and specifications of products are subject to change without prior notice for the improvements. The colors of products may be different due to the printing process.

Hepa filter optional kit

Optional Filter kit ((A)HSC-14P/18P/24P)



Ideal Applications for Airrex Portable Air Conditioner



Industrial Sites

High temperature work sites, car manufacturing plants, ship building yards and steel mills

Repair Shops

Car repair shops, aircraft workshops, farm machinery workshops, gas stations & parking facilities

Heat Generating Equipment

Server rooms and machine rooms

Leisure / Outdoor Event Venues, Farm, & Livestock Ranges

TEMP-AIR Sales Office Mailing Address:

www.tempairsales.com

2031 Exchange Parkway Ste A, Waco, TX 76712

888-535-8841

sales@tempairsales.com